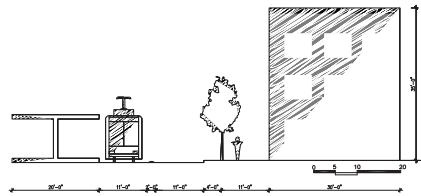


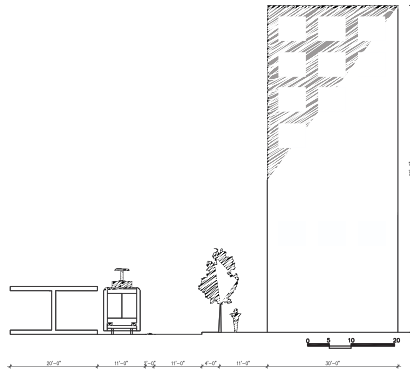
What scale of development at stations?

**DECISION WILL BE MADE BY:
CITY OF HOUSTON**

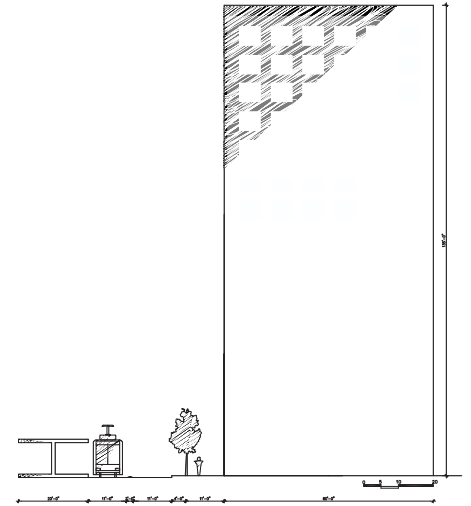
**DECISION TIME:
2008**



Lowrise
1-3 Story



Midrise
4-6 Story

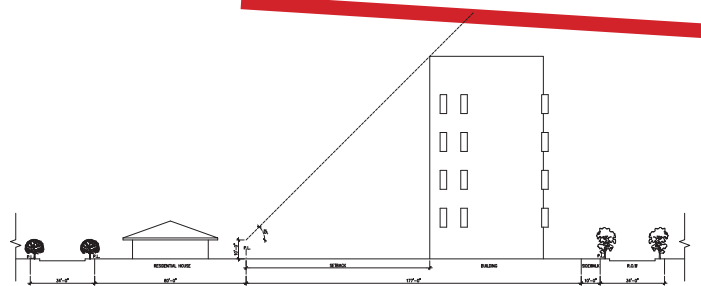
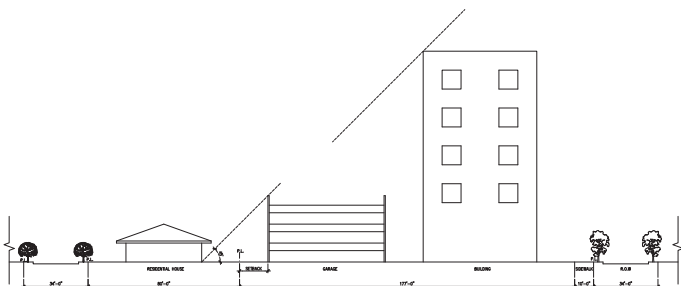


Highrise
7-12 Story

How should buildings relate to adjacent properties?

**DECISION WILL BE MADE BY:
CITY OF HOUSTON**

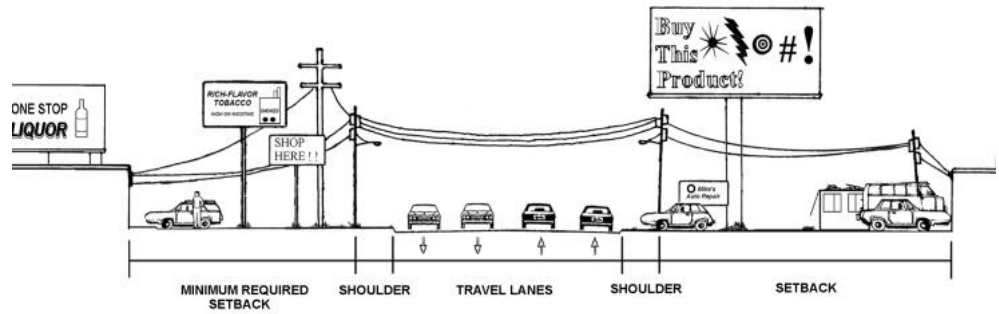
**DECISION TIME:
2008**



How close to the sidewalk should buildings be?

Existing
Typical Streetscape

Excessive setbacks and parking requirements force buildings back from the street and away from each other as they increase in size. The resulting large distances between buildings and parking create a hostile pedestrian environment.



Walgreens at Montrose and Hawthorne Street in Houston

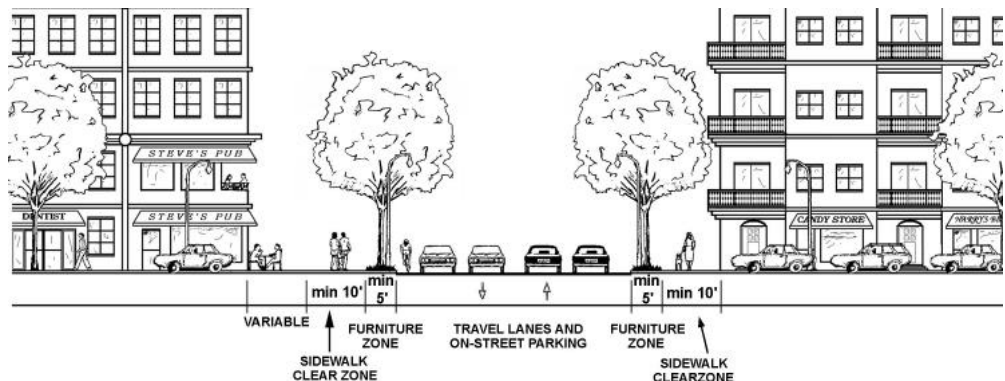


The CVS at Montrose and Richmond

**DECISION WILL BE MADE BY:
CITY OF HOUSTON**
**DECISION TIME:
2008**

Proposed
Typical Streetscape

The proposed street aligns buildings of varying sizes with the street edge. It relocates parking to the street and rear of each lot and introduces a continuous sidewalk, accommodating both cars and pedestrians. Also, the parking can be shared among several businesses therefore, less of it is needed so buildings can occupy more of the lot.



What parts or qualities of our neighborhoods should be protected?



Menil has created a renowned cultural oasis while preserving the integrity of this tranquil residential neighborhood.



1920s-era bungalows

**DECISION WILL BE MADE BY:
CITY OF HOUSTON**
**DECISION TIME:
2008**



Bering Memorial United Methodist Church



McClain Gallery.



St. Basil Chapel The Chapel completes the St. Thomas University Mall.

